



Clarify your herd's potential 
CLARIFIDE

ANDREW BODYCOAT

**GENETICS SPECIALIST
SOUTHERN AUSTRALIA**

Clarifide For Dairy Herd 17

HAPPY BIRTHDAY CLARIFIDE

LAUNCHED HERD 15 - BENDIGO 2015

OVER 15K ANIMALS TESTED TO DATE

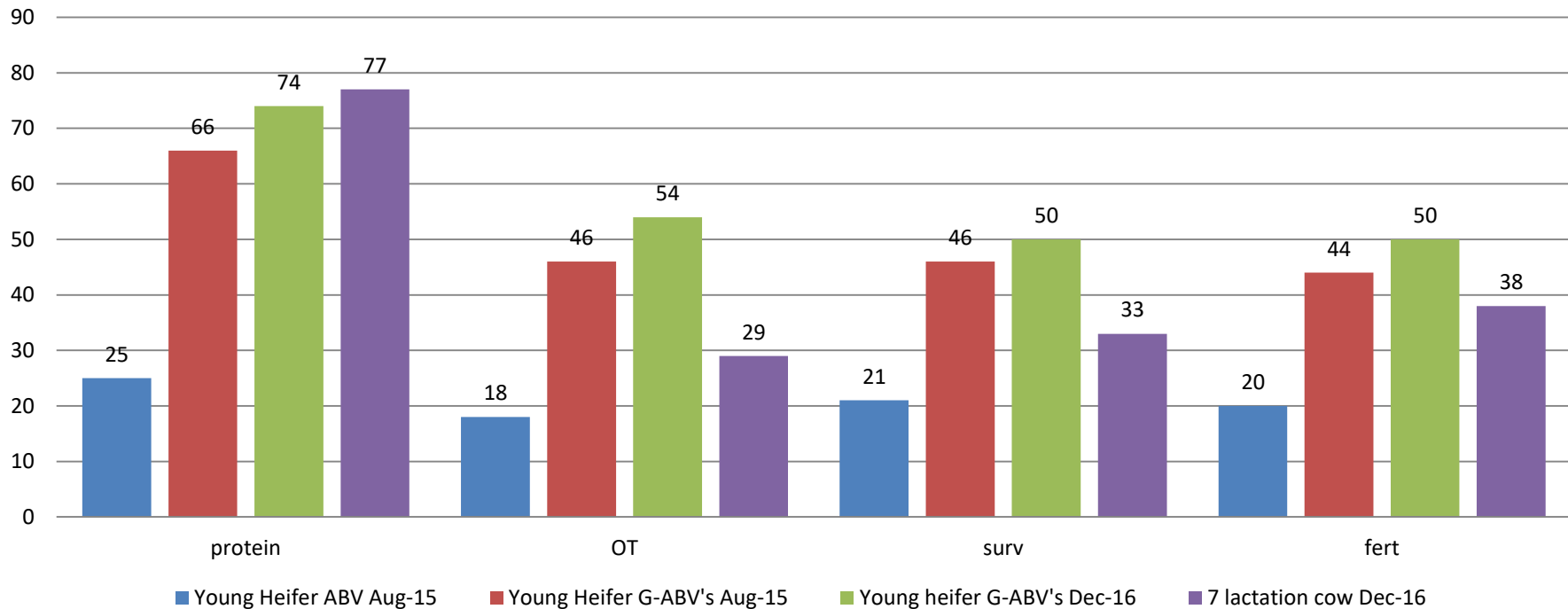
LARGE UPTAKE BY HOLSTEIN AND JERSEY
BREEDS

ENGAGEMENT WITHIN INDUSTRY HIGH



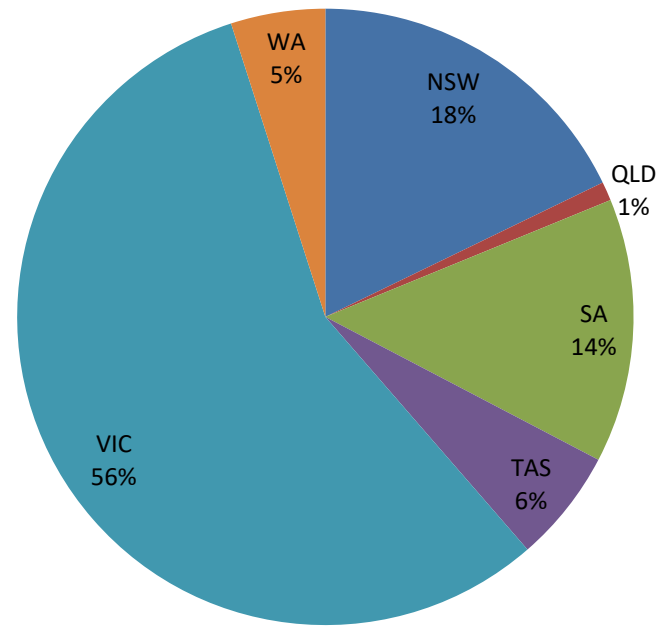
UPDATED RELIABILITIES

Change in Genomic Reliabilities Over 2 Years.



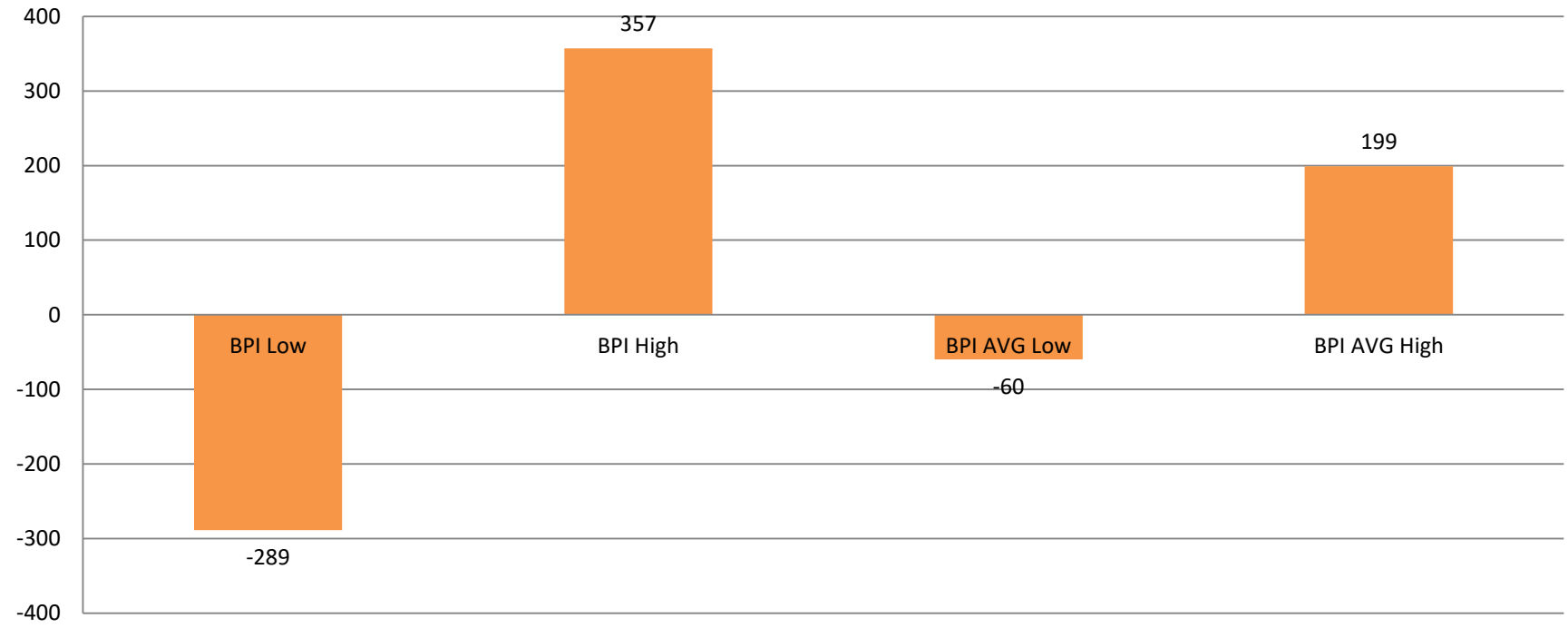
ALL DAIRY REGIONS HAVE BUY IN

Location of Samples



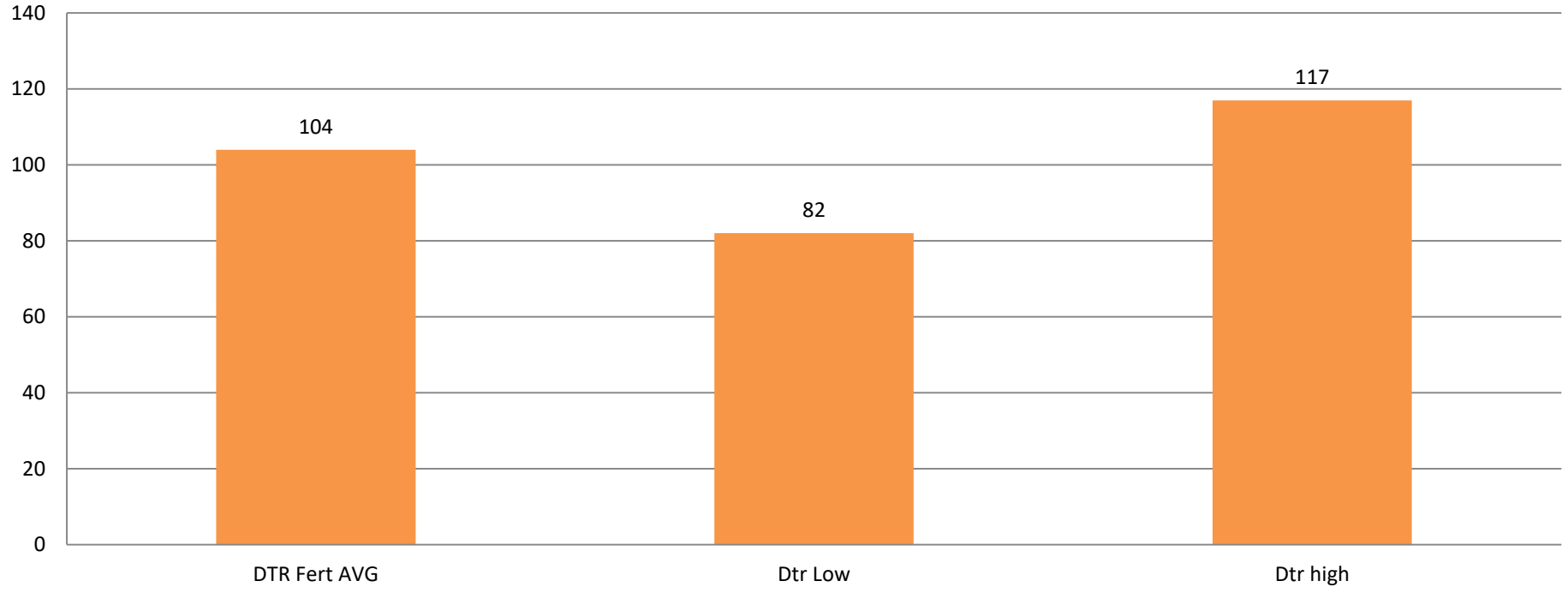
OPPORTUNITIES ABOUND

BPI Variation Across Tested Population



DAUGHTER FERTILITY A CONTINUED FOCUS

Daughter Fertility AVG And Extremes.



CASE STUDY - FERTILITY

SA HEIFER GROUP

31 HEIFERS SELECTED ON BPI – FINE TUNING OF OTHER KEY TRAITS IMPORTANT IN HERD.

AVG DAUGHTER FERTILITY 107

RELIABILITY DTR FERTILITY 50

AVG SURVIVAL ABV OF GROUP 104

27 OUT 31 HEIFERS CONCEIVED = 87% IN CALF

WEST VIC HEIFER GROUP

70 HEIFERS SELECTED BY BPI AND KEY TRAITS FERTILITY - MASTITIS – PROTEIN OUT OF 110 ANIMALS

AVG DAUGHTER FERTILITY OF 108

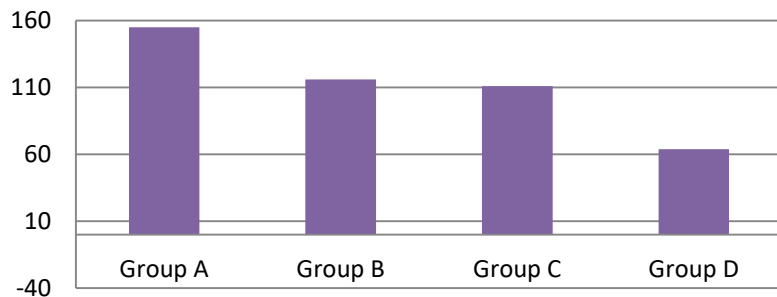
70 SUBMITTED TO TWO ROUNDS OF SEX SEMEN

BACK UP BULL USED FOR REMAINDER

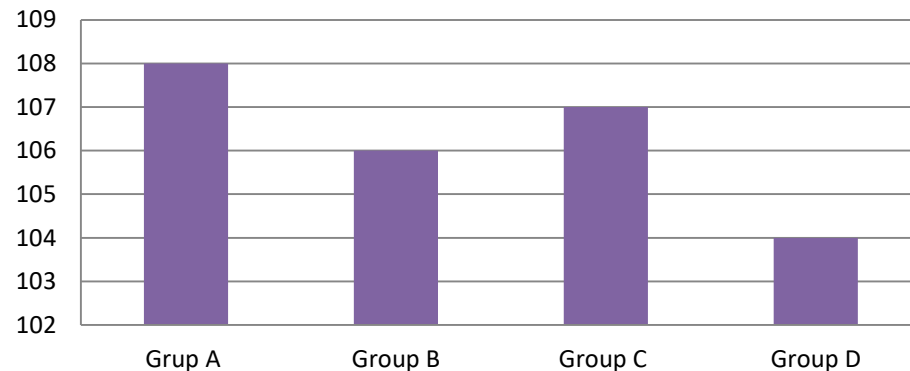
82% IN CALF @ PT TO SEXED SEMEN OVER 2 ROUNDS

CASE STUDY – MANAGEMENT DECISIONS NORTHERN VIC HERD 2016 - 139 HEIFERS

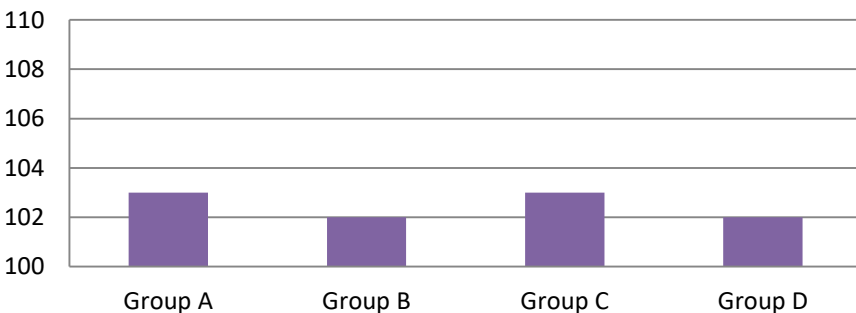
BPI Variation Of Heifer Groups



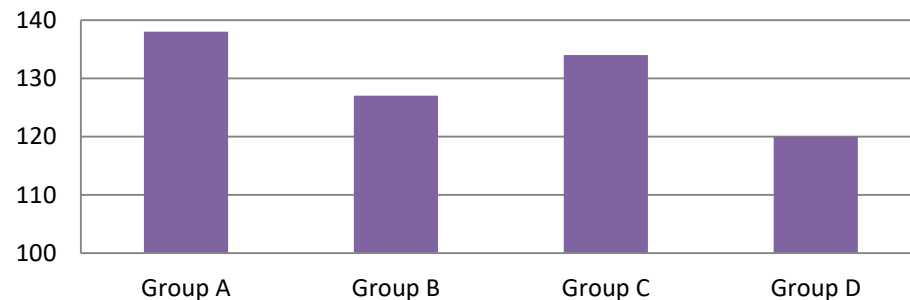
DTR Fertility Variation By Group



Mammary Variation By Group



Mastitis Variation By Group



CASE STUDY – CULLING DECISIONS.

WESTERN VIC HERD – TESTED 214 SPRING 2015 AND AUTUMN 2016 HEIFERS.
- NEEDED TO CULL 120 HEIFERS.

PRE CULL DATA.

AVG BPI : 105 DIFFERENCE BETWEEN TOP & BOTTOM HEIFERS 313
AVG DTR FERTILITY: 103 (SPREAD OF 93 TO 114)

POST CULL DATA

POST CULLING BPI AVG: 138. DIFFERENCE BETWEEN TOP AND BOTTOM HEIFER 206
DAUGHTER FERTILITY 105 (SPREAD OF 101 – 114)
CULLS HEIFERS AVERAGED : BPI 95 : DTR FERT 104

INDUSTRY OPPORTUNITY– HOW TO SELL SURPLUS HIGH GENERIC MERIT FEMALES
LOCALLY?

HERD AUDITING

ARE YOU MAKING THE MOST OF GENETIC INFORMATION?

Herd Overview

- Summarize herd genetic merit based on Sire ABV for more important traits

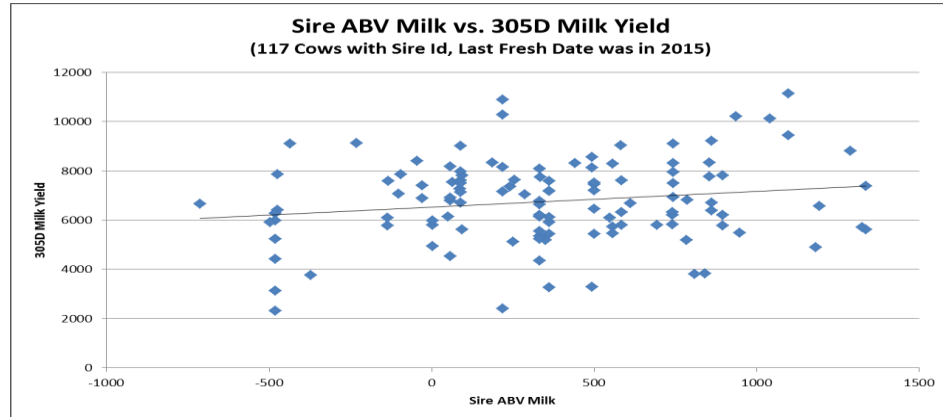
Response to Genetic Selection

- Examine the relationship between observed production/reproduction and Sire ABV estimates of genetic merit

Project heifer supply

- Estimate Heifer Replacement Inventory

Birth Year	# Females	BPI	Milk	Prot ein	Fat	Daughter Fertility	Survival
2011	37	102	379	14	5	102	103
2012	42	138	308	14	9	104	104
2013	43	159	316	12	21	103	104
2014	59	147	404	15	15	102	104
2015	85	159	629	19	19	101	104
2016	79	169	732	19	21	102	105
Genetic Progress		\$11.2/year	80L/year	1.3kg/year	2.9kg/year	-0.3%/year	0.3%/year



zoetis